



FreshWater®  
Salt System Ready



100% Filtration  
SilentFlo Circulation



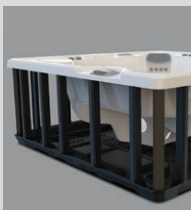
Moto-Massage® DX



Super Energy  
Efficient



Wireless Remote



Polymer Substructure  
& Base Pan

HIGHLIFE® COLLECTION

# GRANDEE™



*Shown with Alpine White Shell and  
Java Cabinet*

People	Seating	Jets	Voltage
7 Seats	Open	49 Jets	230 V/ 20 amp

**Size**  
254 × 231 × 97 cm

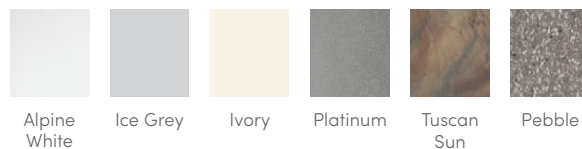
**Water Care**  
FreshWater® Salt System Ready

# HIGHLIFE® COLLECTION

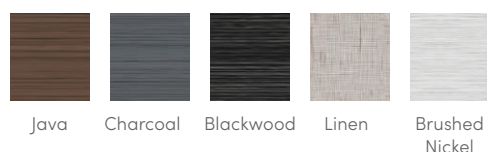
# GRANDEE™



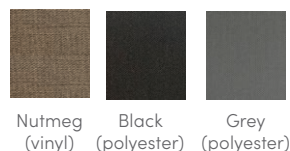
## SHELL COLOURS



## CABINET COLOURS



## COVER COLOURS



## CABINET AND SHELL COLOUR OPTIONS\*

Cabinet Colours	Java	Charcoal	Blackwood	Linen	Brushed Nickel
Shell Colours	Alpine White Ice Grey Ivory Tuscan Sun Pebble	Alpine White Ice Grey Platinum Tuscan Sun Pebble	Alpine White Ice Grey Platinum	Alpine White Ivory Tuscan Sun Pebble	Alpine White Ice Grey Platinum

## LEGENDARY MASSAGE

### 49 Personalised-Control Jets

- 2 Moto-Massage® Seats
- Soothing Stream™ Seat
- Precision™ Jet Seat
- HydroStream™ Seat

## EASY WATER CARE

<b>Water Care System</b>	FreshWater® Salt System Ready
<b>Filtration System</b>	100% no-bypass filtration, top loading Tri-X™ filters, 30 m² effective filtration area

## LEADING ENERGY EFFICIENCY

<b>Jet Pump 1</b>	WaveMaster™ 9000; One-speed, 2.5 HP Continuous Duty, 5.2 HP Breakdown Torque
<b>Jet Pump 2</b>	WaveMaster™ 9200; Two-speed, 2.5 HP Continuous Duty, 5.2 HP Breakdown Torque
<b>Circulation Pump</b>	SilentFlo 5000™ for quiet, continuous filtration
<b>Heater</b>	Titanium No-Fault™ 1,500 W / 230 V
<b>Insulation</b>	Multiple Layers of Foam Insulation; Certified to California Energy Commission (CEC) and APSP 14 energy efficiency standards for portable spas
<b>Cover</b>	9 to 6 cm tapered, 32 kg/m³ density foam core, with hinge seal

## SIZE

<b>Dimensions</b>	254 × 231 × 97 cm
-------------------	-------------------

## CAPACITY

<b>Seating Capacity</b>	7 seats
<b>Water Capacity</b>	1,725 litres
<b>Weight</b>	360 kg dry; 2,645 kg filled**

## ADDITIONAL FEATURES

<b>Smart Spa Technology</b>	Hot Spring Spas App, Powered by the Connected Spa Kit
<b>Water Feature</b>	BellaFontana® with 3 illuminated arcs of water
<b>Cover Lifters</b>	CoverCradle™, CoverCradle II, Lift 'n Glide™, or UpRite™
<b>Steps</b>	Steps are available to match cabinet colours
<b>Entertainment</b>	Bluetooth® Wireless Sound System (Optional)
<b>Control System</b>	IQ 2020™ with wireless remote control 230 V / 20 amp 50 Hz
<b>Lighting System</b>	Luminescence™ multi-colour four-zone
<b>Cooling System</b>	CoolZone® (Optional)